

MONTHLY MEMBERSHIP PROGRESS REPORT

LOCATION TEXAS

District 2 A2

Results as of: 3/31/2023

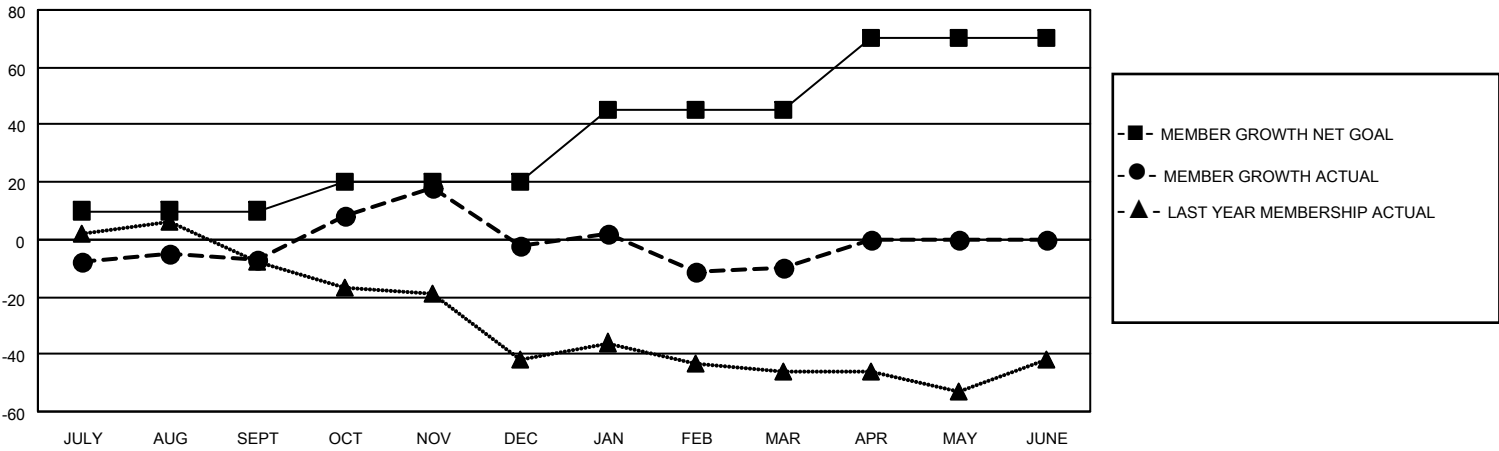
Clubs			
RESULTS FOR 2022-2023			
QUARTER	NEW CLUB GOAL	NEW CLUBS	DROPPED CLUBS
JULY/AUG/SEPT	0	0	3
OCT/NOV/DEC	0	0	0
JAN/FEB/MAR	1	0	0
APR/MAY/JUNE	1	0	0

Members			
RESULTS FOR 2022-2023			
QUARTER	MEMBER GROWTH NET GOAL	MEMBER GROWTH ACTUAL	DROPPED MEMBERS ACTUAL (including transfers)
JULY/AUG/SEPT	10	41	45
OCT/NOV/DEC	10	49	42
JAN/FEB/MAR	25	39	43
APR/MAY/JUNE	25	0	0

GOALS AND ACTUAL NEW CLUBS CUMULATIVE



GOALS AND ACTUAL MEMBERS CUMULATIVE



DROPPED CLUBS: 3

32 CLUBS OF 61 ADDED 1 OR MORE NEW MEMBERS

GENDER DISTRIBUTION

MALE	881 (60.10%)
FEMALE	583 (39.77%)
NON BINARY	0 (0.00%)
PREFER NOT TO ANSWER	2 (0.14%)

DROPPED MEMBERS

[CLICK HERE FOR CUMULATIVE MEMBERSHIP DATA](#)

DECEASED	16
CLUB CANCELLED	0
OTHER	114
TOTAL	130

TOTAL FAMILY UNIT MEMBERS	272
FAMILY MEMBERS PAYING HALF DUES	138